

**THE
PREMIERE**
Kapashera

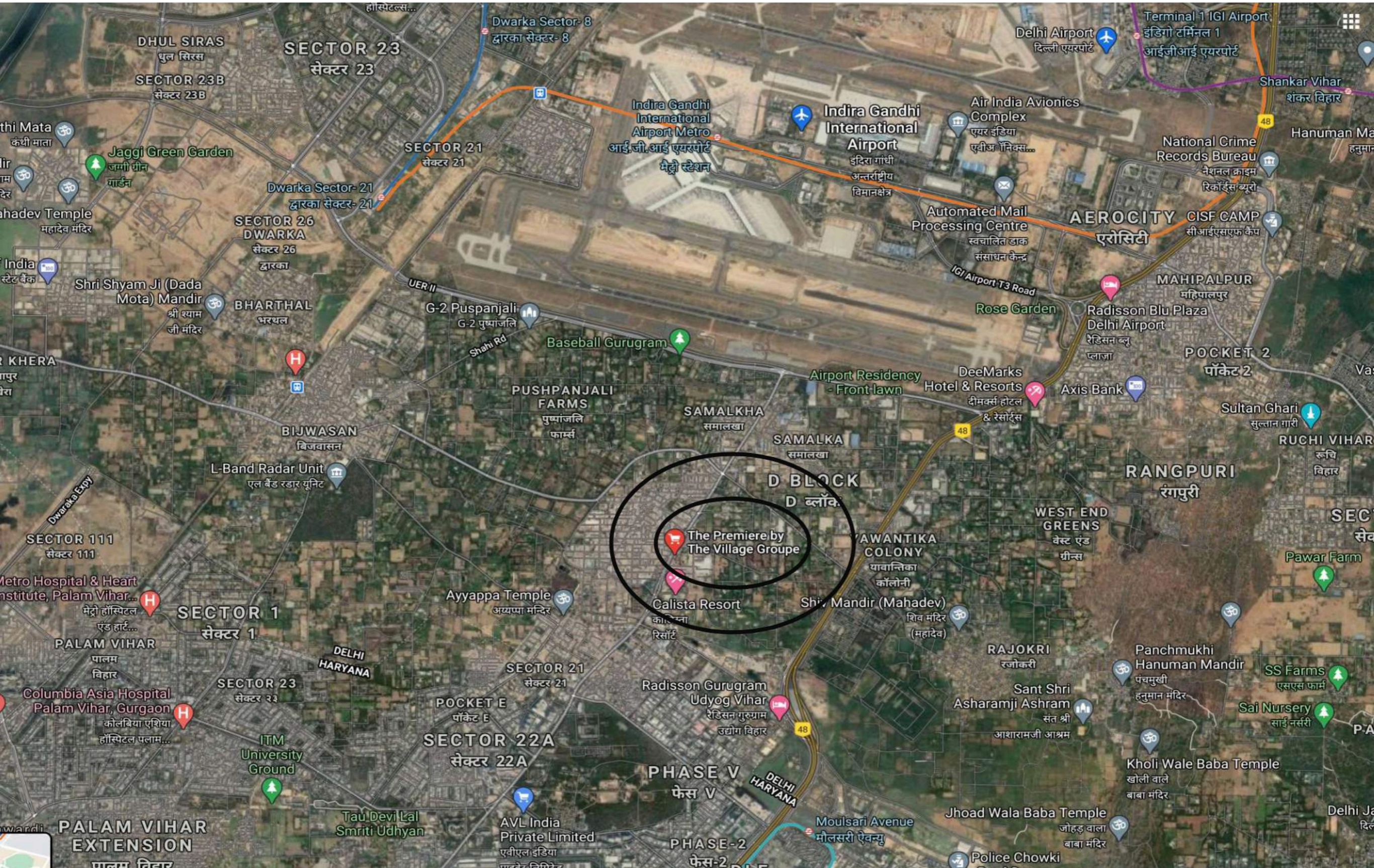
Key Facts

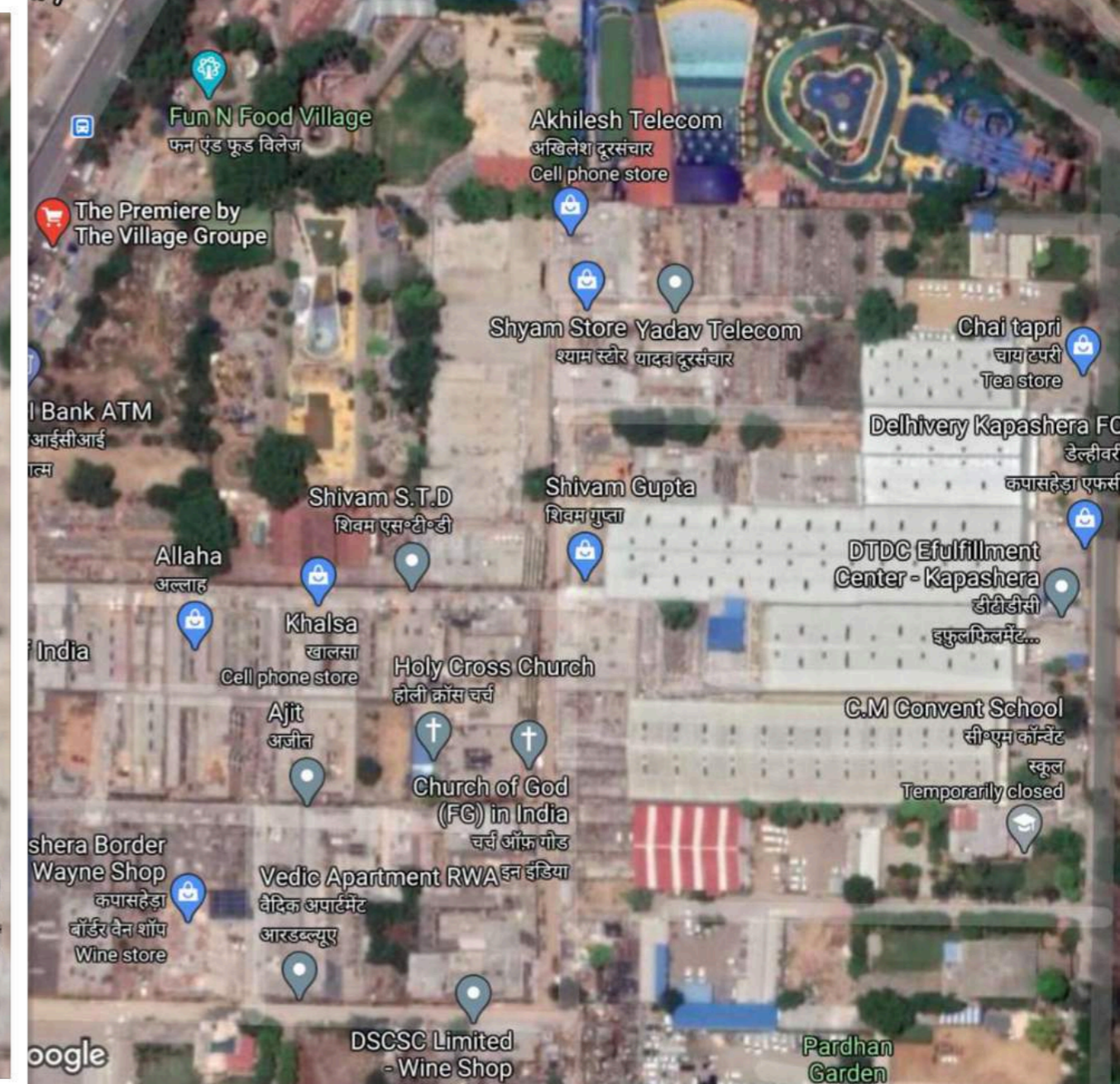
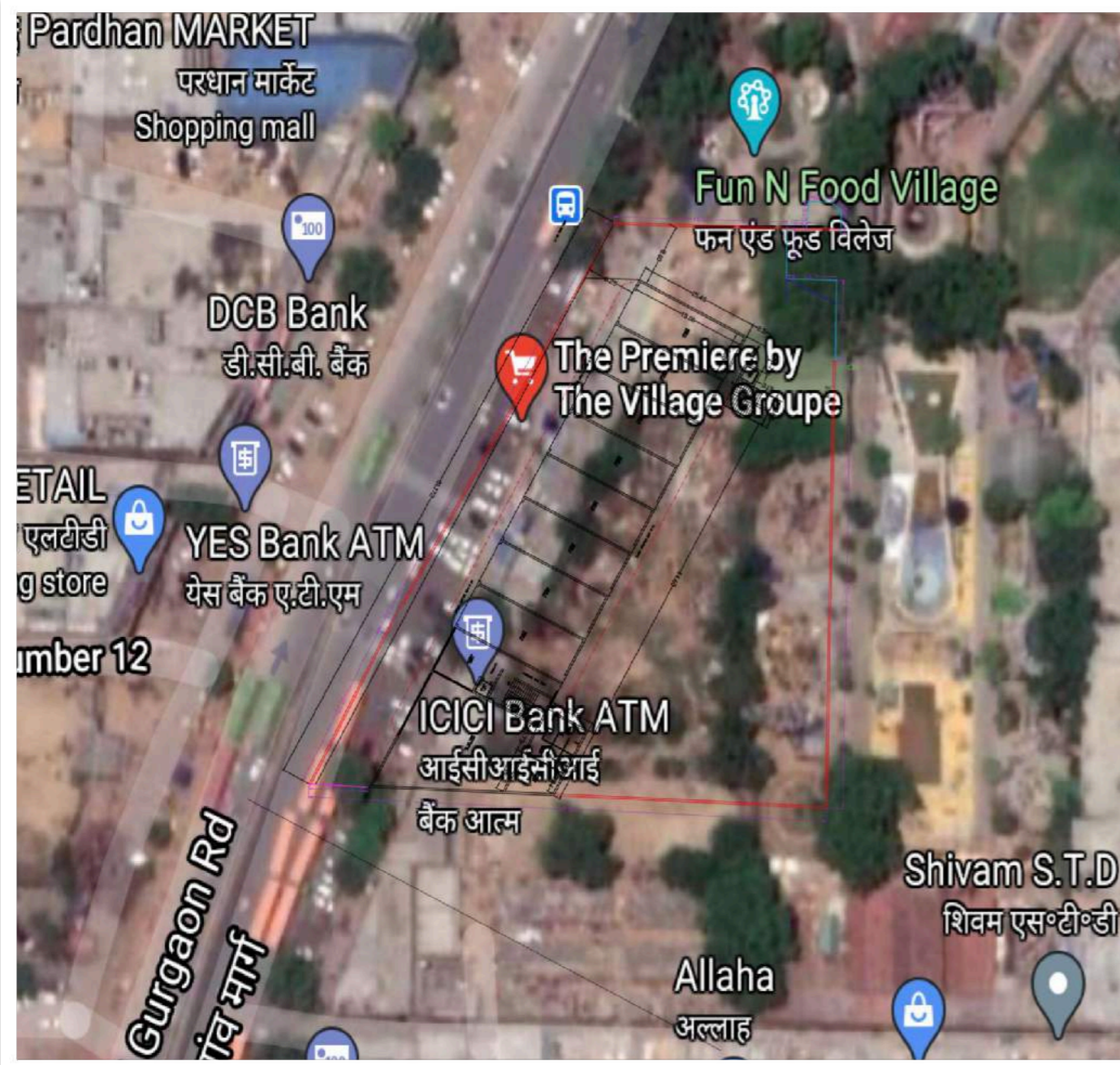
Location

- Located at Kapashera (On Old Delhi - Gurgaon Road)
- 270 Feet Frontage, Adjacent to Fun N' Food Village
- Direct access to Dwarka and Mahipalpur
- 2-Level Building with provision for internal lifts/stairs includes External Lift & Staircase
- 16 shops (970 Sq.Ft. carpet area each) & 2 shops (2326 Sq.Ft. carpet area each)
- Ceiling Height: 15 Ft. (Ground Floor Shops) and 12 Ft. (First Floor Shops)
- 15 min driving distance from Palam Vihar, Udyog Vihar and Bijwasan

**THE
PREMIÈRE**

Kapashera





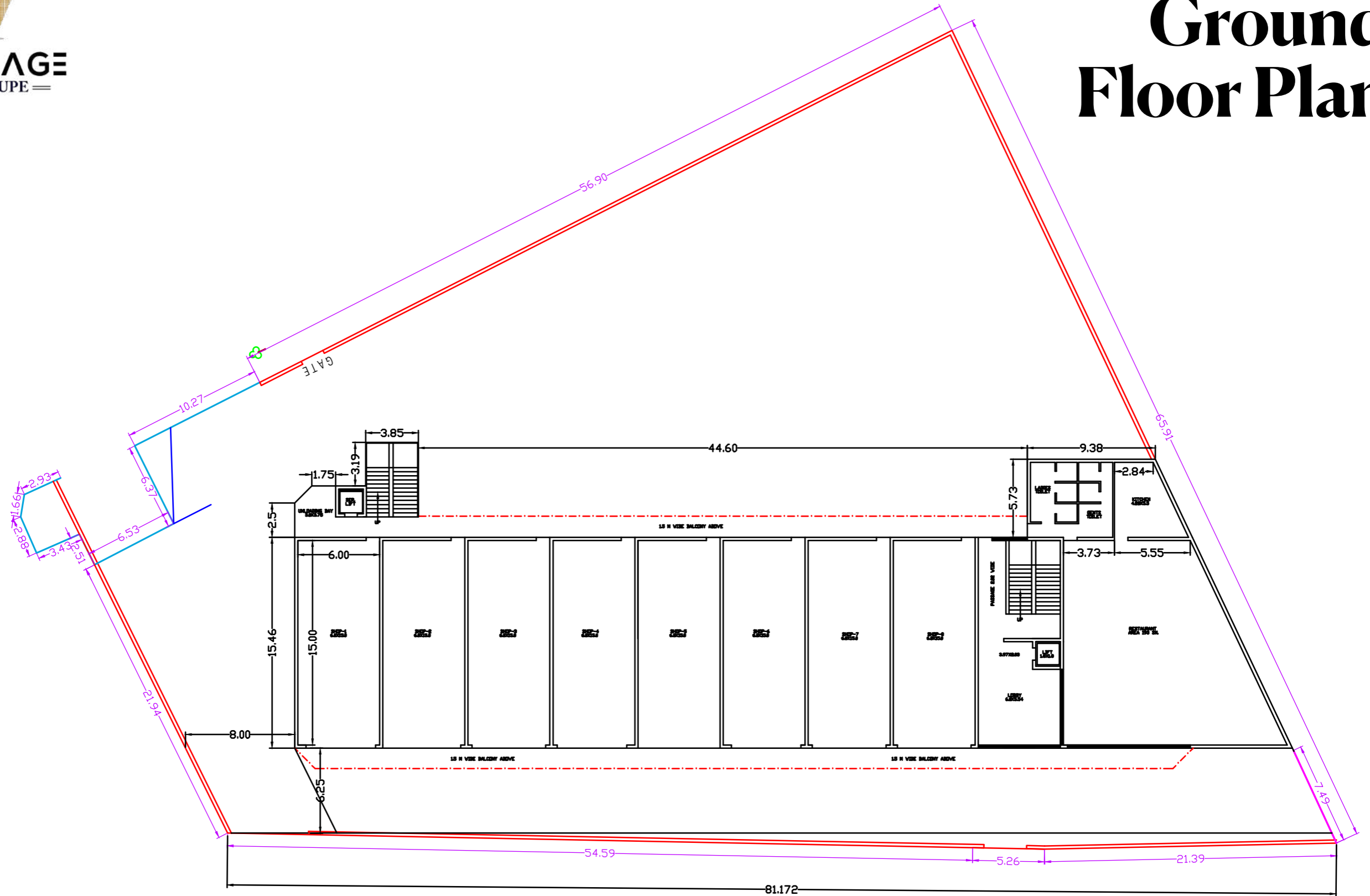
Elevations



**THE
PREMIÈRE**

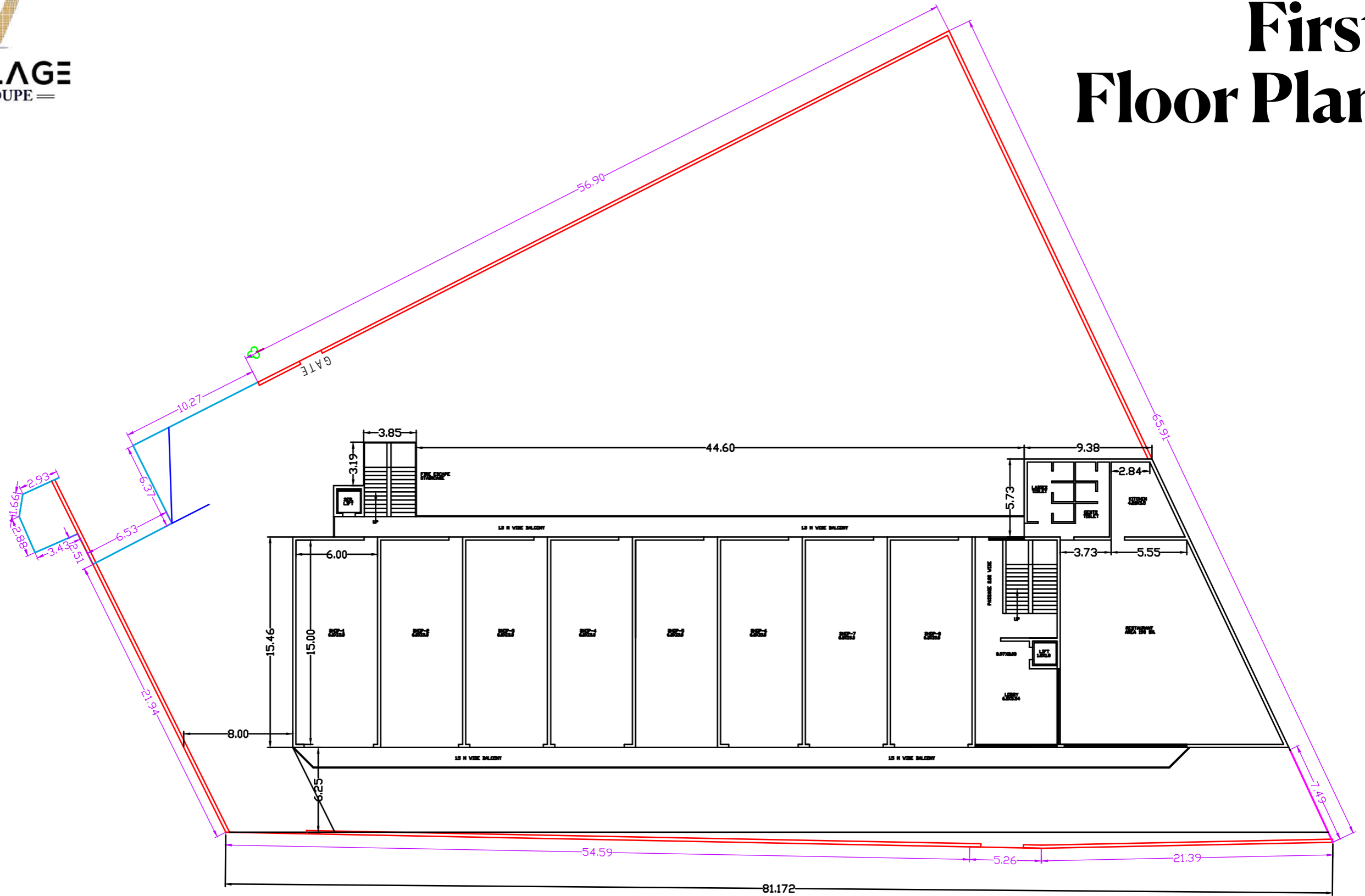
Kapashera

Ground Floor Plan



AREA 2024 08 07

First Floor Plan



AREA 1828 SQ FT.

Key Facts

Site and Project Info

- Land size - 1 Acre
- Total Carpet Area - 24,000 SFT
- Gross Leasable Area - 25,000 SFT
- On-site Parking - 25 cars; Adjacent Parking - >500 cars
- 200 feet frontage on Old Delhi-Gurgaon Road
- Column-free building = Flexible store layout
- 2-level building with lifts and staircases (internal & external)
- Competitive pricing and lower CAM.

**THE
PREMIÈRE**

Kapashera

Contact

Vinay Shenoy

 **98454 70722**

 **Vinay.Shenoy@VillageGroupe.Com**